

**BOARD OF EDUCATION**

Portland Public Schools  
**Study Session**  
**November 14, 2011**

**Windows Cafeteria**

Blanchard Education Service Center  
501 North Dixon Street  
Portland, Oregon 97227

***Note:** Those wishing to speak before the School Board should sign the citizen comment sheet prior to the start of the regular meeting. No additional speakers will be accepted after the sign-in sheet is removed, but citizens are welcome to sign up for the next meeting. While the School Board wants to hear from the public, comments must be limited to three minutes. All citizens must abide by the Board's Rules of Conduct for Board meetings.*

*Citizen comment related to an action item on the agenda will be heard immediately following staff presentation on that issue. Citizen comment on all other matters will be heard during the "Remaining Citizen Comment" time.*

*This meeting may be taped and televised by the media.*

*Background materials for this meeting may be found on the Board's website under "Public Notices".*

**STUDY SESSION AGENDA**

- |    |  |         |
|----|--|---------|
| 1. | <b><u>CITIZEN COMMENT</u></b>              | 5:00 pm |
| 2. | <b><u>BUDGET PRIORITIES DISCUSSION</u></b> | 5:30 pm |
| 3. | <b><u>DINNER BREAK</u></b>                 | 7:15 pm |
| 4. | <b>8:40 pm</b>                             |         |
|    |  |         |
| 8. | <b><u>ADJOURN</u></b>                      | 8:55 pm |

The next Regular Meeting of the Board will be held on **November 29, 2011**, at **5:00 pm** in the Board Auditorium at the Blanchard Education Service Center.

**Portland Public Schools Nondiscrimination Statement**

Portland Public Schools recognizes the diversity and worth of all individuals and groups and their roles in society. All individuals and groups shall be treated with fairness in all activities, programs and operations, without regard to age, color, creed, disability, marital status, national origin, race, religion, sex, or sexual orientation.

Board of Education Policy 1.80.020-P



# PORTLAND PUBLIC SCHOOLS

P.O. Box 3107 / Portland, Oregon 97208-3107

Telephone: (503) 916-3741 • FAX: (503) 916-2724

## WORK SESSION STAFF REPORT

### **LONG RANGE FACILITIES PLAN**

**Board Meeting:** November 14, 2011

**Executive Committee Lead:** C.J. Sylvester, COO

**Department:** FAM and OSM

**Staff Lead:** Tony Magliano, Director FAM

Jim Owens, Director of Capital Operations OSM

**District Priority:** Design and Implement Capital Improvement Plan

Bob Alexander, Property Development Manager

### **I. ISSUE STATEMENT**

A Long Range Facilities Plan (Plan) is a critical component in achieving a healthy, 21st Century learning environment. The Plan will assist in setting priorities for investment in our schools. Plan development will be accomplished utilizing a facilitated series of meetings with an advisory committee which will include community members, PPS parents, business community representatives, school committee representatives, design and construction industry representatives, city, county and Metro representatives as well as key district staff and regional administrators.

### **II. BACKGROUND**

The Long Range Facilities Plan will incorporate public input, an updated facility assessment, enrollment balancing, enrollment trends, school capacity and financing plan while recognizing the goal of educating children in a 21st Century learning environment. This Plan will be consistent with ORS 195.110 which requires large school districts to have an updated 10-year plan. The City of Portland is also in the process of updating its Comprehensive Plan and must adopt this plan as a component of that effort.

To develop the Long Range Facilities Plan, the intent is to have approximately seven facilitated two-hour meetings with the Long Range Facilities Plan Advisory Committee, where members will have background materials and white papers outlining key issues where we are seeking input and guidance. These items may include topics such as enrollment forecasts, school capacity formulas, condition assessments, priorities for improvements, and financing options. The Plan will be developed in draft

form for the Superintendent's consideration, presented to the Board to solicit input and then brought back to the Board for final adoption.

### **III. RELATED POLICIES/BEST PRACTICES**

The Long Range Facilities Plan will incorporate analysis of the latest thinking in how the built environment impacts students' educational success utilizing Board criteria for school modernization.

Research will be done on High Performance Schools, and innovative techniques and sustainable best practices including capacity needs, building construction, resource conservation and financing.

The following Board policies will inform and direct the Plan creation:

- A. Resolution 3986 - Criteria to Determine the Order of Rebuilding and Renovation of PPS School Buildings to Create 21st Century

**VI. BOARD OPTIONS**

An updated Long Range Facility Plan is required by ORS 195.110 in 2012. The Board may decide to not convene an advisory committee and have staff produce an updated Long Range Facility Plan which would meet state requirement.

**VII. STAFF RECOMMENDATION**

Staff recommends the Board support the Superintendent's establishment of a Facility Plan Advisory Committee and the described process to develop a draft Long Range Facility Plan for Board adoption.

**VIII. TIMELINE FOR IMPLEMENTATION/EVALUATION**

The updated Long Range Facility Plan is proposed to be presented to the Board in draft form in April, 2012, and for final consideration in May, 2012.

**ATTACHMENTS**

- A. Long Range Facility Plan Summary
- B. Long Range Facility Plan Projected Timeline

## Portland Public Schools Long Range Facilities Plan

What is a long range facilities plan?

- x Board adopted strategy to identify strategies and priorities for capital investments in district facilities to:
  1. Support program needs and improve student achievement
  2. Improve facility conditions
  3. Provide 21<sup>st</sup> century learning environments for students and teachers
- x Assess condition of district facilities

Why is it important?

- x The long range facilities plan sets the priority for capital investment in school facilities
- x State law requires each school district with more than 2,500 students produce a long range plan

What goes into the plan?

### *Facility Assessment*

- x Building, major system, heating, plumbing, structural, roofing
- x Accessibility
- x Seismic readiness
- x Historic assessment

### *Enrollment Trends*

- x Enrollment forecast (10 years)
- x Birth rates
- x New housing development
- x Neighborhood population projections

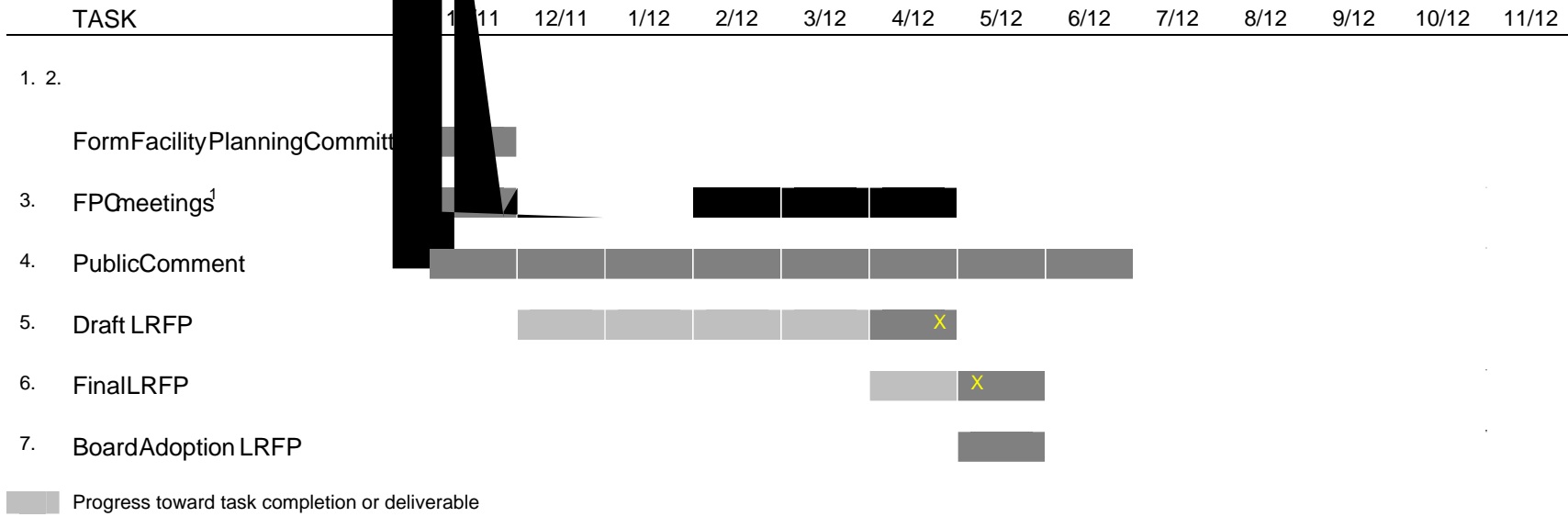
### *Enrollment Balancing*

- x School configuration
- x Boundary adjustments
- x Program size

### *School Capacity*

- x Ability to meet program needs
- x Ability of schools to accommodate population

# LongRangeFacilitiesPlan:ProjectedTimeLine



<sup>1</sup>Committee meetings would include opportunity for public comment/questions  
 x Deliverables: Background Reports; Draft and Final Long Range Facilities Plan  
 x Timeline and deliverables assume a capital bond program later than May 2011